



# Acknowledgments

**The following members of ICPI provided critical resources to develop this presentation:**

- **College of American Pathologists**
- **Association of Pathology Chairs**
- **American Society for Investigative Pathology**
- **American Society for Clinical Pathology**
- **United States Canadian Academy of Pathology**



# What is Pathology?

- Diagnostic Medicine
- Teaching
  - Medical Students
  - Residents
  - Graduate Students
  - Fellow Physicians
- Basic and Clinical Research into Mechanisms of Disease

A photograph of a laboratory desk with various items including a microscope, test tubes, and papers. The desk is cluttered with several white plastic containers, some with labels, and several sheets of paper, some with green and blue sticky notes. A microscope is visible in the background.

# What are the Career Options for Pathologists?

- Community Practice (80%)
- Academic Practice & Medical School Administration (15%)
- Industry (3%)
- Government, Public Health & Regulatory Positions, e.g., FDA (1%)



# Job Hunting Experience After Residency, First Jobs - 2002

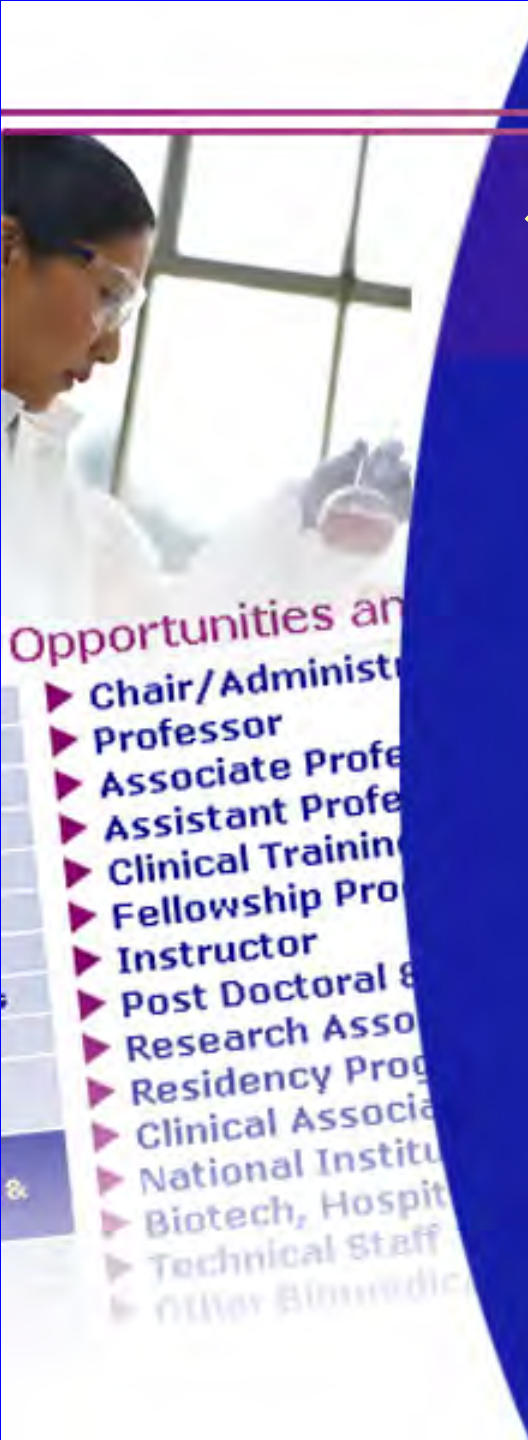
## How many Applications Submitted?

- 1 to 3 41%
- 4 to 6 21%
- 7 or more 33%

## How many Interviews?

- None 3%
- 1 to 3 66%
- 4 to 6 28%
- 7 or more 3%

ASCP Residency Survey Data, N=58





# Job Hunting Experience After Residency, First Jobs - 2002

## How many Offers?

• none		5%
• 1		38%
• 2	23%	
• 3	18%	
• >3		16%

## Salary Offered:

• >\$125,000		63%
• \$101-\$125,000	23%	
• \$76-\$100,000	8%	
• <\$75,000		2%
• Not discussed	4%	

ASCP Residency Survey Data, N=58



# Job Hunting Experience First Jobs - 2002

What preference for practice?

- Community Practice 57%
- Academic Medicine 27%
- No Preference 14%
- Other 2%

ASCP Residency Survey Data, N=58



# What and How Long are the Training Programs?

- Anatomic & Clinical Pathology (4y) 85%\*
- Anatomic Pathology (3y) 10%
- Clinical Pathology (3y) 3%
- Research Pathology (lifetime) 1%

\* Percentage of Programs



A person in a white lab coat is standing in a laboratory or office, pointing at a large computer monitor. The monitor displays a software interface with various data points and graphs. The person is also holding a pen over a document on the desk. The background is a dark blue gradient.

# Pathology Specialties (Fellowship Training)

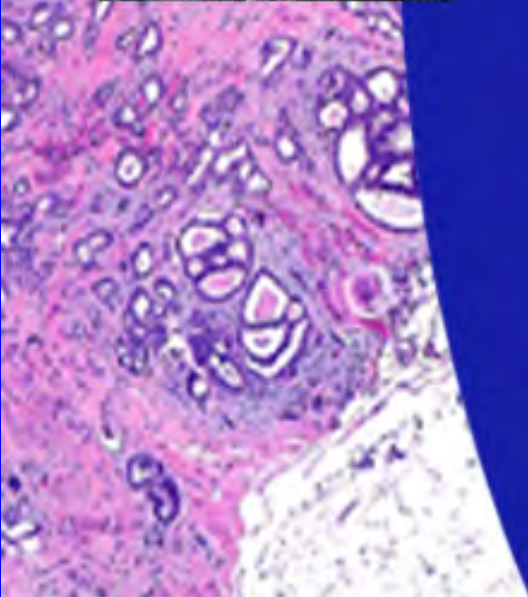
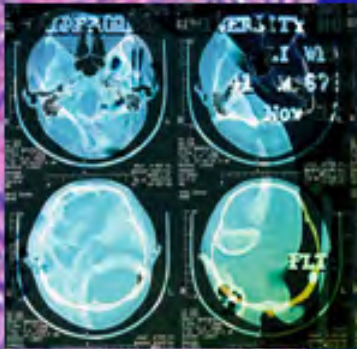
## Clinical Pathology:

- Hematology
- Microbiology
- Transfusion Medicine
- Cytogenetics
- Clinical Chemistry
- Nuclear Medicine

# Pathology Specialties (Fellowship Training)

## Anatomic Pathology:

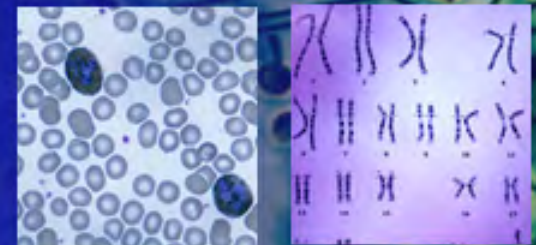
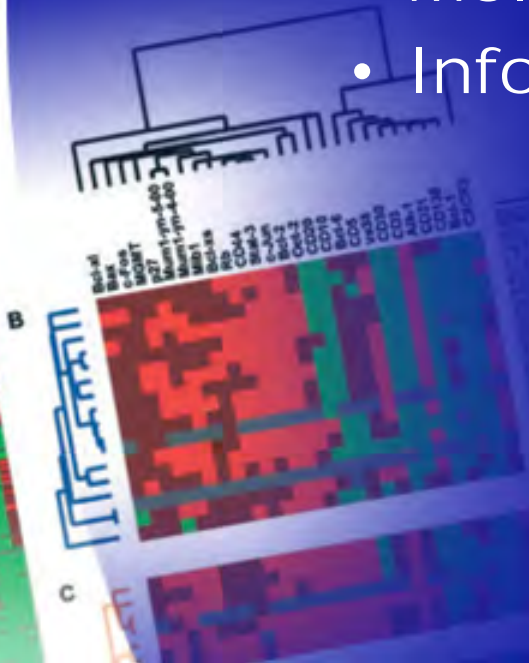
- Cytology
- Gynecologic Pathology
- Neuropathology
- Surgical Pathology
- Pediatric Pathology
- Gastrointestinal
- Bone & Soft Tissue
- Head & Neck
- Lung



# Pathology Specialties (Fellowship Training)

Mixed Specialties:

- Forensic Pathology
- Hematopathology
- Molecular Diagnostics
- Informatics





# What is the Lifestyle for Pathologists?

- 48 hour work week vs. 55 hour average work week all specialties
- Above average professional satisfaction (70%)
- Above average family satisfaction
- Average professional respect
- Below average stress

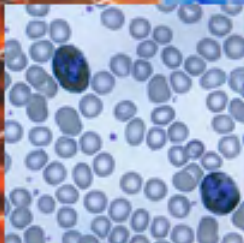




# Current and Future Career Opportunities



- Starting salary offers over \$125,000 – above primary care specialties, slightly below surgical specialties



- Two offers for each graduating candidate; higher for U.S. graduates
- 20,000 Board-Certified Pathologists U.S.; 2,500 in training (800,000 physicians in U.S.)
- Anticipated increased job opportunities in five years

# Grants & Funding

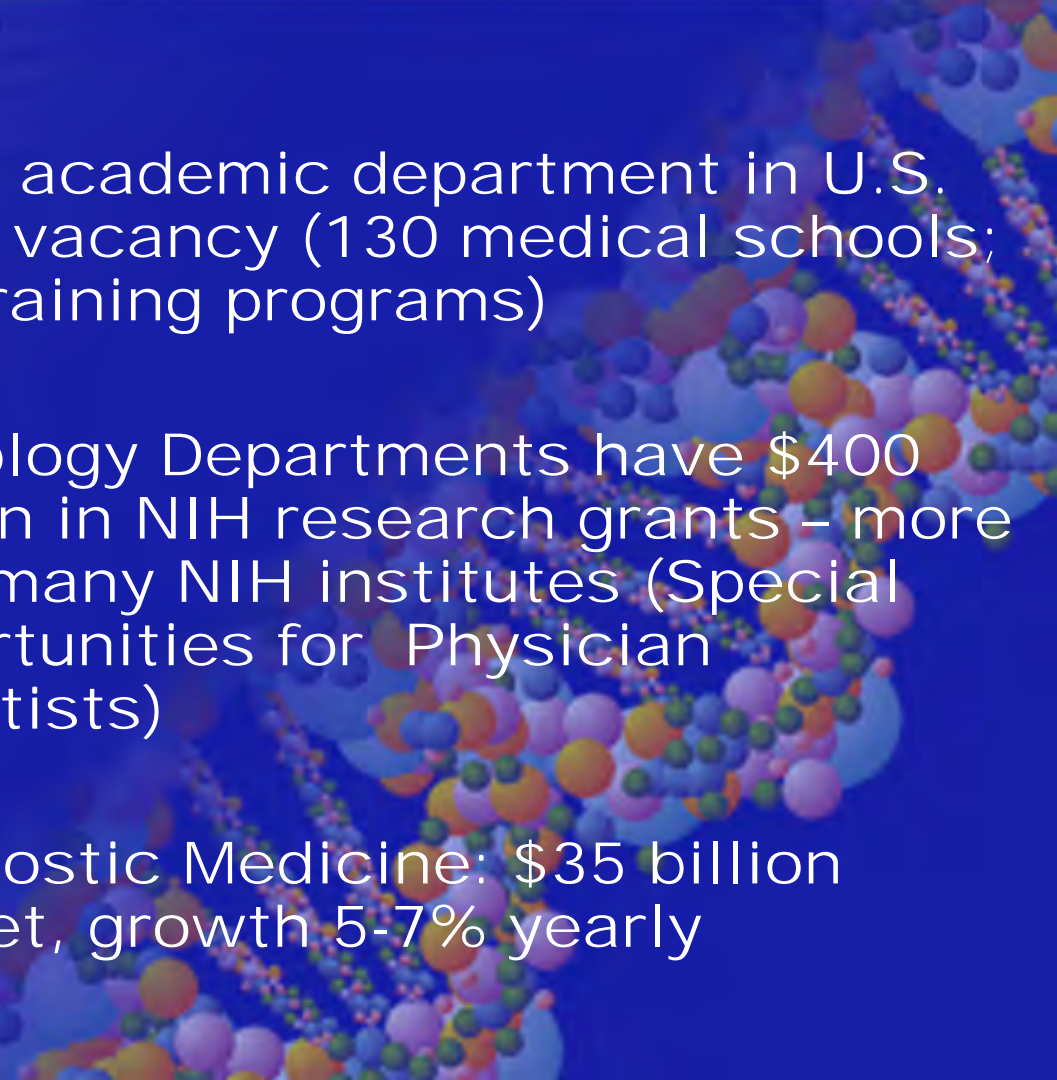
## Quick Links

- ▶ [News Flashes and Archives](#)
- ▶ [Grants Page](#)
- ▶ [CRISP](#)
- ▶ [Research Contracts](#)
- ▶ [Research Training](#)
- ▶ [CSR-Review](#)
- ▶ [NIH Guide](#)
- ▶ [Institutes & Centers](#)

# Current and Future Career Opportunities

- ▶ [Current News Flashes](#)
- ▶ [Grants Page](#) -- Learn about grants, fellowships, policy, and procedures, and contact the Office of Extramural Activities
- ▶ [CRISP](#) -- Clinical Research in Support of Biomedical Research

- Every academic department in U.S. has a vacancy (130 medical schools; 155 training programs)
- Pathology Departments have \$400 million in NIH research grants – more than many NIH institutes (Special Opportunities for Physician Scientists)
- Diagnostic Medicine: \$35 billion market, growth 5-7% yearly





# Pathology Practice Demographics



## Type of Practice

- Solo 7%
- Pathology Group 67%
- Multispecialty Group 7%
- Medical School 10%
- Hospital 10%
- Independent Laboratory 9%
- Locum Tenens 1%

College of American Pathologists Survey, N=940

# Pathology Practice Demographics

## Practice Size

- Solo 7%
- 2 11%
- 3-4 25%
- 5-6 18%
- 7-10 13%
- 11 or more 22%

College of American Pathologists Survey, N=940







# Pathology Salaries

## Median Income by Age

- All Ages \$220,000
- < 40 \$180,000
- 40 – 49 \$230,000
- 50 – 59 \$250,000
- >59 \$200,000

College of American Pathologists Survey, N=940



# Pathology Salaries

Income Information from Other Sources

## AAMC (ASCP data)

- Range \$127,000 to \$314,854
- Average \$194,813

## Pam Pohly's Net Guide

- Average \$194,813
- 169,138 to \$232,432

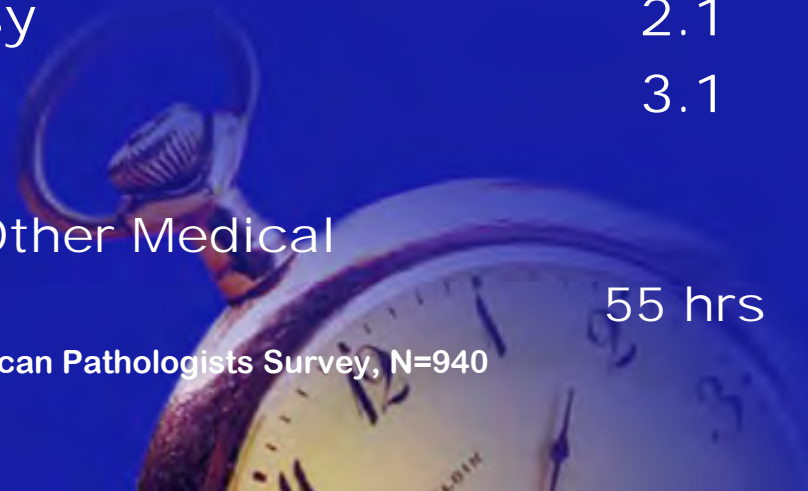
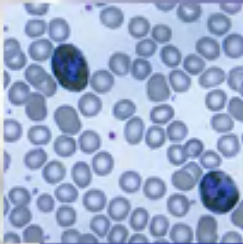
(Median, various sources, 1997 data)

# Pathology Workload

Mean hours per week	48 hrs
• Surgical Pathology	25.0
• Cytopathology	5.9
• Billable Clinical Pathology	2.6
• Clinical Pathology Management	7.4
• Teaching/Research	1.9
• Autopsy	2.1
• Other	3.1

Mean Total, Other Medical Specialties 55 hrs

College of American Pathologists Survey, N=940



# Pathology Resident Career Plans

- Pursue More Training 58%
- Private Practice 19%
- Academic Medicine 19%
- Military 2%
- Leave Pathology or US 1%
- Not yet employed 0.6%

AMA FRIEDA, N=351 Residents Completing Training, 2001



# Pathology Training Programs



Total # of Residents	2,212
Avg. # per Program	14.3
Avg % Female	49.7%
Avg % IMG	57.1%

AMA FRIEDA, Training Program Survey, 2001



# Pathology Training Programs

## Faculty Characteristics

Avg. Number Full-Time	24.5
Avg. Number Part-Time	2.1
Avg. % Female	28.7%

AMA FRIEDA, Training Program Survey, 2001



# Pathology Training Programs

## Resident Workload

Avg. Weekly Workload  
48.3 hours

Avg. Annual Compensation  
\$36,498

Avg. Vacation  
3.1 weeks

AMA FRIEDA, Training Program Survey, 2001



# Where to go & what to do next?

For information about pathology  
training and fellowships:

- [www.abppath.org](http://www.abppath.org)
- [www.pathologytraining.org](http://www.pathologytraining.org)
- [www.acgme.org](http://www.acgme.org)
- [www.ama-  
assn.org/ama/pub/category/2997.  
html](http://www.ama-assn.org/ama/pub/category/2997.html) (FREIDA On Line)





# Where to go & what to do next?

To find out about individual training or fellowship programs:

- [www.pathologytraining.org](http://www.pathologytraining.org)
- [www.apcprods.org](http://www.apcprods.org)
- [www.university.edu](http://www.university.edu)
- [www.medical\\_school.edu/pathology](http://www.medical_school.edu/pathology)



# Where to go & what to do next?

To find a job:

- [www.ascp.org](http://www.ascp.org)
- [www.asip.org](http://www.asip.org)
- [www.cap.org](http://www.cap.org)
- [www.PathologyOutlines.com](http://www.PathologyOutlines.com)



# Where to go & what to do next?

To learn more about pathology:

- [www.apcprods.org](http://www.apcprods.org)
- [www.asip.org](http://www.asip.org)
- [www.uscap.org](http://www.uscap.org)
- [www.ascp.org/member/rps/](http://www.ascp.org/member/rps/)
- [www.aclps.org](http://www.aclps.org)
- [www.cap.org/html/member/residents\\_forum.html](http://www.cap.org/html/member/residents_forum.html)
- [www.aamc.org/students/considering/start.htm](http://www.aamc.org/students/considering/start.htm)



# Where to go & what to do next?

- [www.abppath.org](http://www.abppath.org)
- [www.apcprods.org](http://www.apcprods.org)
- [www.ascp.org](http://www.ascp.org)
- [www.asip.org](http://www.asip.org)
- [www.cap.org](http://www.cap.org)
- [www.uscap.org](http://www.uscap.org)
- [www.aclps.org](http://www.aclps.org)
- [www.medical\\_school.edu/pathology](http://www.medical_school.edu/pathology)
- [www.pathologytraining.org](http://www.pathologytraining.org)
- [www.university.edu](http://www.university.edu)



